

Medical Mission to Pune, India

January 2024 — Christine Birnie

Indiaconnection.org
reaching the unreached, teaching the untaught



January 2024 Trip

- Dec 30, 2023 – Jan 12, 2024
- Partner with India Connection
 - In India: Girls Home, International School, Bible College, Church, Pastor Support, Medical Care
- Partner with St. John Fisher University, Wegmans School of Pharmacy, Koinonia Fellowship, other churches



RICH CLABAUGH/STAFF

Trip Logistics Medical Mission Team

- ∞ Two week trip
 - Medical Camp (2 locations)
 - Women's Health Day
 - Visit Pharmacy School
 - Small Education/Health Projects
- ∞ Mission Team
 - 15 member team
 - Includes pharmacy students/clinical rotation
 - Medical/prayer/logistics
 - Families

**There is one body, but it has many parts.
But all its many parts make up one body. It
is the same with Christ. 1 Corinthians 12:12**



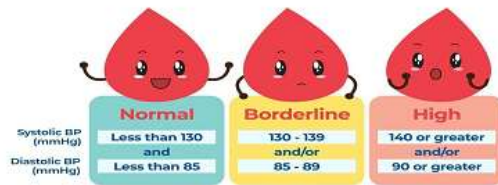
Medical Camp

- ❧ Basic medical and dental care, reading glasses, audiology, pharmacy, prayer
- ❧ Hypertension and diabetes screening
- ❧ More than 1000 patients served across two locations

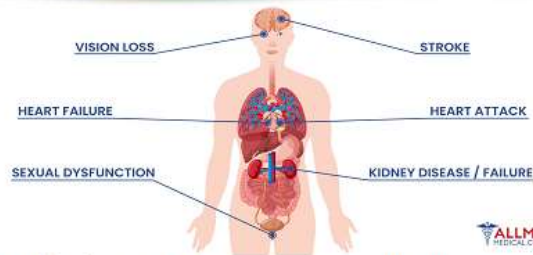


Triage, Hypertension/Diabetes Screening

Blood Pressure



High Blood Pressure can cause



Your Blood Pressure Is: _____ mm HG
 Your Blood Pressure Is: (Good) (Elevated) (High)
 Lifestyle Changes:

- Find The Right Approach To Eating
- Maintain A Healthy Weight
- Keep Moving
- Limit Your Sodium Intake
- Reduce Stress
- Quit Smoking
- Work With Your Doctor



Physician Check-Up



Pharmacy



Dental



Reading Glasses Check



Audiology



Prayer Station



Women's Health Education



Girls Home



Partnership with Pharmacy School in India

- ☞ Pharmacy student/faculty presents at pharmacy school
- ☞ Provided student support for medical camp
- ☞ MOU signed between St. John Fisher University and DY Patil School of Pharmacy
- ☞ International student exchange for APPE



Families



Fellowship of Believers



Not forsaking the assembling of ourselves together, as the manner of some is; but exhorting one another: and so much the more, as ye see the day approaching. Hebrews 10:25

Indiacconnection.org

Indiacconnection.org

reaching the unreached, teaching the untaught

For more information:

India Connection: <https://indiacconnection.org/medical-missions/>
Christine Birnie Jegadesh: cbirnie@sjfc.edu

